

### Chillax VIBE CARTRIDGE

**USER INFORMATION**

Please read this leaflet carefully through. It contains important information on safe use and storage, as well as possible adverse effects and hazards. The e-cigarette (pre-filled pod) is filled with 10 ml of conventional freebase nicotine e-liquid at a concentration of 10ml/130mg.

**Not refillable!**  
Ingredients: Propylene Glycol, Vegetable Glycerin, Natural & Artificial Flavors, Conventional Freebase Nicotine.

**INFORMATION ABOUT GROUPS OF PEOPLE WHO SHOULD NOT USE THE PRODUCT:**  
The following groups of people should not use nicotine-free and/or flavored e-liquids: non-smokers, people with known hypersensitivity or allergy to any of the specified ingredients, children, minors under 18, pregnant women, breastfeeding women, people with known diseases of the vascular system, and people who have been treated by a doctor for other reasons. Consumption of e-liquids is prohibited by said groups of people. If you are unsure whether it is safe for you to consume this product, please consult your doctor before using it for the first time.

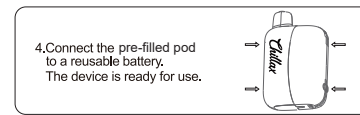
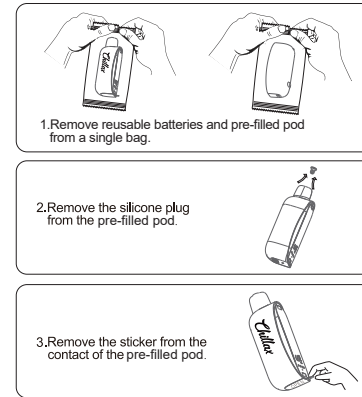
**SAFE STORAGE/STORAGE INFORMATION**  
Keep the product cool, dry, and out of the reach of children. Please dispose of damaged products immediately at appropriate collection points for household chemicals. Do NOT store this product with food or beverages. If the e-cigarette were dropped from great height or submerged in water, the consumer shall be informed that the following must be checked:  
• that the elements have not become loose;  
• that there is no leakage of e-liquid;  
• that the mouthpiece is not damaged;  
• if a visual examination of the product shows no signs of damage, the user may use the equipment after cleaning it and in particular the mouthpiece, using paper or a dry cloth;  
— the electronic cigarette shall not be used if parts are cracked or deformed and the defective items shall be replaced;  
— the electronic cigarette shall not be used when its E-liquid is empty or almost empty as well as if the user notices a perceptible change in flavour;

**INSTRUCTIONS FOR CLEANING YOUR E-CIGARETTE:**  
When you use them, they mix with dirt, grime, and bacteria. To clean your e-cigarette, you'll need to use a new paper towel and cotton swabs on a clean area to wipe down the parts.

**SAFE USE INFORMATION**  
This product is a e-cigarette (Not Refillable), which can neither be refilled with e-liquid, rechargeable. Be sure to read all warnings and usage instructions on the device packaging and in this leaflet before use. The use of technically defective devices can pose risks to your health (see below). Use the product only according to the instructions for use and try not to open it even after it is completely used up. If the liquid from the device comes into contact with your skin, promptly wash it thoroughly with warm water and soap. If you have swallowed liquid, contact a doctor immediately.

Hold the original packaging ready. Store the product in a dry place and NOT at temperatures below 0°C or above 40°C. It is recommended not to smoke e-cigarettes for more than 20 seconds to prevent overheating. If you encounter any signs of an allergic reaction during or after product use, such as a rash, nausea, dizziness, shortness of breath, or similar symptoms, discontinue use immediately and seek medical advice. Please present this leaflet along with the product packaging when consulting a doctor. This product is NOT intended for use by children or adolescents under 18 years of age.

#### HOW TO USE IT ?



#### E-CIGARETTE OPERATION AND MAINTENANCE

- Before use, remove the top dust plug and tail sealing metal rod. Direct vaping
- Take a puff and the screen will display other chillaxshake or display "May the puff be with you." The interactive mode lasts for 10 minutes counting from the last puff.
- Vape 2 sec to interact with other chillax shake within 10 meters.
- After taking a puff, quickly shake or quickly knock the device 3 times to change the animation.
- After each drop or impact, the user should check the e-cigarette; (The components are not loose, the e-liquid is not leaking, and the nozzle is not damaged) is broken; If visual inspection of the product shows no signs of damage, the user can use paper or a dry cloth to clean the device (especially the nozzle) before use;
- If the parts are cracked or deformed, the e-cigarette must not be used, and the defective part should be replaced.
- E-cigarettes must not be used when the e-cigarette fuel tank is empty or nearly empty, and when the user notices a noticeable change in taste;
- E-cigarette components have a lifespan of two years
- If the liquid from the device comes into contact with your skin, promptly wash it thoroughly with warmwater and soap.

**INFORMATION FOR SAFE REFILLING**  
This product cannot and must NOT be refilled!

#### DAINGEROUS/ADVERSE EFFECTS INFORMATION:

**CAUTION:** Nicotine is a highly addictive and toxic substance. Nicotine causes physical and psychological dependence. Nicotine can trigger vascular diseases, worsen existing vascular diseases, or have a detrimental effect on diabetes. Nicotine can be transmitted to an infant through breast milk in breastfeeding women. The use of e-liquids containing nicotine

can generally have negative effects on blood vessels and blood circulation. When using E-liquids with or without nicotine in defective or malfunctioning e-cigarettes can lead to the development of further toxic substances or substances that are highly harmful to health (e.g., formaldehyde, acetaldehyde, etc.). If uncertain about the device's proper functioning, refrain from its use.

**INFORMATION FOR PRIVATE HOUSEHOLDS**

Manufacturer information in accordance with Section 18 Paragraph 4 ElektroG (new)  
The Electrical and Electronic Equipment Act (ElektroG) contains a number of requirements for the handling of electrical and electronic devices. The most significant ones are summarized herein.

1. Separate collection of old devices Electrical and electronic equipment categorized as waste is commonly termed as old equipment. Owners of such outdated devices are obligated to segregate these items from general municipal waste. Specifically, these old devices should not be disposed of in household waste; instead, they should be deposited within designated collection and return systems.
2. Batteries and accumulators as well as lamps  
Owners of old devices have old batteries and accumulators that are not enclosed by the old device, as well as lamps, which can be removed from the old device non-destructively, usually before handing it over to a collection point separate old device. This does not apply if old devices are prepared for reuse with the involvement of a public waste disposal agency.
3. Options for returning old devices  
Owners of old devices from private households can deliver them free of charge at public waste disposal collection points or at designated collection points arranged by manufacturers or distributors in accordance with the ElektroG. Stores with a sales area of at least 400 m<sup>2</sup> for electrical and electronic devices are obliged to accept returns, as well as grocery stores with a total sales area of at least 800 m<sup>2</sup>. These stores must either operate permanently or open several times a year, offering electrical and electronic devices for sale.  
This obligation extends to sales conducted through remote communication means, provided the storage and shipping areas for these devices are at least 400 m<sup>2</sup>, or the total storage and shipping areas are at least 800 m<sup>2</sup>. Distributors must ensure

accessible return options within a reasonable distance from the end user. The option of returning an old device free of charge is available if a distributor is obligated to take it back, especially when delivering a new device that essentially performs the same functions.  
In cases where a new device is delivered to a private household, the old device of the same type can also be handed over there for free collection. This policy applies specifically to remote sales of devices falling under Categories 1, 2, or 4 in accordance with Section 2 Paragraph 1 of the ElektroG, namely "heat exchangers," "screen devices," or "large appliances" (the latter having at least one external dimension over 50 centimeters).  
End users must be informed of suitable return options at the time of purchase. Additionally, there is an option for free return to distributor collection points, irrespective of purchasing a new device, for old devices not exceeding 25 centimeters in any external dimension. This return option is limited to three old devices per type of device.

4. Meaning of the "crossed-out trash can" symbol  
The symbol of a crossed-out garbage can, which is regularly shown on electrical and electronic devices points out that the respective device must be collected separately from unsorted municipal waste at the end of its service life. This device does not contain batteries and accumulators.

#### CUSTOMER FEEDBACK

Name	Contact Number
Method Purchase	Date
Consumer issues:	
Adverse event reporting:	
Feedback:	

If you have any after-sales quality problems, Please contact your local dealer.

#### INSTRUCTIONS FOR CLEANING YOUR E-CIGARETTE :

When you use them, they mix with dirt, grime, and bacteria. To clean your e-cigarette, you' need to use a new paper towel and cotton swabs on a clean area to wipe down the parts. Leaving the product for too long or in a high temperature environment can cause a change in taste in the event of damage to the battery or accessories, the device must not be used further.

#### TOXICOLOGICAL INFORMATION:

Nicotine poses a toxic risk when ingested orally (swallowed) or upon skin contact. Improper device uses or malfunctions may lead to the generation of other toxic or carcinogenic substances such as formaldehyde, acetaldehyde, acrolein, benzene.  
• Toxicity if swallowed: ATE (oral) 295.16 mg/kg body weight;  
• Toxicity in skin contact: ATE (dermal) 2951.59 mg/kg body weight (ATE = Acute Toxicity Estimate)  
The solvents contained are highly pure substances compliant with current standards.

#### INFORMATION FOR PRIVATE HOUSEHOLDS:

**Volume: 10ml**  
**Rechargeable Charging Port: Type-C**  
**Quantity: 1 pc Disposable Device**

**POSSIBLE ADVERSE EFFECTS OF E-CIGARETTE USERS AND THEIR ENTourage**  
Vaping can cause lung damage and may also affect lung health in other ways. Every time you smoke an e-cigarette, you inhale harmful chemicals and addictive nicotine.

**SHFT ELECTRONIC GADGETS TRADING OPC**  
**Assessment No:** A9-(I)-12-23-03342  
**Address:** 1201 Metropolitan Tower A, Mabini St. Barangay 699 First District 1004 Malate NCR, City of Manila, First District Philippines  
**Email:** shftcorporation@gmail.com  
**Web:** www.shftinternational.com

(5)310-555-10  
 0919 077 0677

**Manufacturer:** Shenzhen Weimei Electronic Technology Co.,Ltd  
**Address:** 201, Building B1, Fumin Industrial Zone, Heshu Road, Tangwei Community, Fuhai Street, Baoan District, Shenzhen, China.  
**License No:** 6144030129  
**Website:** www.chillaxvapetech.com  
**E-mail:** info@chillaxvapetech.com  
Batch No.240624  
Manufactured date:2024-06-24  
Best by: 2024-06-23



No unlawful or prohibited substances.